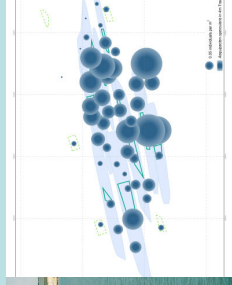
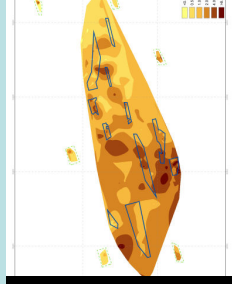
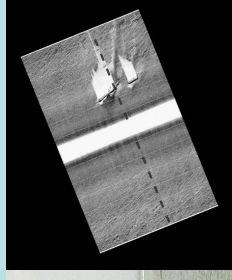
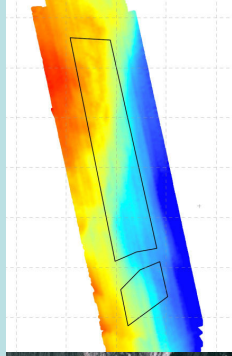
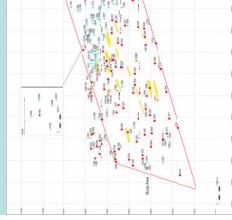


# East Channel ASSOCIATION

## Regional Environmental Monitoring and Management Report 2005-2006

December 2006



**The East Channel Association and Emu Limited acknowledge the considered analysis, assistance and advice of the following parties in undertaking the works described:**

**Cefas**

**English Nature (Natural England)**

**English Heritage**

**The Joint Nature Conservation Committee**

**Defra MCEU and Defra MFA**

**Marine Ecological Surveys**

**Unicomarine**

**Andrews Survey (Lankelma Andrews)**

**Liverpool University, Department of Geography**

**HR Wallingford**

**The Crown Estate**

**BMAPA**

**Marineseen**

**Fisheries Liaison Consultees**

**The Maritime and Coastguard Agency**

**ICES HAWG**

**ECEN Meeting Attendees**

**TWG Meeting Attendees**

**The East Channel Association**

The East Channel Association (ECA) consists of companies developing marine aggregate extraction applications in the Eastern English Channel. This Regional Environmental Monitoring and Management Report has been produced to fulfill the ECA's commitment to undertake coordinated management and regional environmental monitoring as described in the REA (2003) and ECA Regional Monitoring Blueprint v0.3 (2005).

**Document Information and Circulation**

**Document Title** East Channel Association Regional Environmental Monitoring and Management Report 2005 – 2006

**Version Number** December 2006

**Date of Issue** 18<sup>th</sup> December 2006

**RDM Contact** ECA Regional Development Manager  
rdm@marinespace.co.uk

**ECA Contact** ECA Facilitator, CEMEX UK Marine Ltd,  
Baltic Wharf, Marine Parade,  
Southampton, SO14 5JF.

**Circulation List** The ECA Companies 12 copies (2 copies ea.)

**TWG Members**

Defra MCEU	2 copies
JNCC	2 copies
English Nature	2 copies
DCLG	2 copies
CEFAS	6 copies
Crown Estate	2 copies
English Heritage	2 copies

**ECEN Attendees**

BGS	1 copy
BMAPA	1 copy
Royal Haskoning	1 copy
Marinet	1 copy
The MCA	1 copy
NFSA	1 copy
South East Coastal Group	1 copy
South Downs Coastal Group	1 copy
Wessex Archaeology	1 copy

**Fishing Liaison Group Members**

1 copy each to organisations 12 copies (1 copy ea.)  
and individuals listed in Appendix 25

**Total** **50 copies**

**How to Obtain Further Copies**

Further printed copies of this report can be obtained, at a cost of £40.00 each, by contacting either the RDM or ECA Facilitator as shown above or by post to:

MarineSpace Ltd, PO Box 6687, Wimborne, Dorset, BH21 9DR.

**The Companies of the ECA**

 Britannia Aggregates Ltd Lower Road Northfleet Kent DA11 9BL	 CEMEX UK Marine Ltd Baltic Wharf Elm Street Marine Parade Southampton Hampshire SO14 5JF	 DEME Ltd Greenstede House Wood Street East Grinstead West Sussex RH19 1UZ
 Hanson Aggregates Marine Ltd Burley Wharf Marine Parade Southampton Hampshire SO14 5JF	 United Marine Aggregates Ltd UMA House Shopwyke Chichester West Sussex PO20 2AD	 Volker Dredging Ltd Robert Brett House Ashford Road Canterbury Kent CT4 7PP

**Further Acknowledgements**

The authors of the report would like to thank the survey contactors, vessel owners and laboratories who provided services during the field work, sample processing and data analysis undertaken as part of this monitoring programme.

**Restriction on use of data contained within this report**

All data contained within the report are the property of the ECA. The use or reproduction of the data contained within this report is forbidden without the written permission of all members of the ECA.

This report has been produced on behalf of the ECA by Emu Ltd & MarineSpace Ltd



Emu Limited, 1 Mill Court,  
The Sawmills, Durley,  
Southampton, SO32 2EJ.



The East Channel Association (ECA) is formed of 6 companies who are extracting, or applying to extract, marine aggregate from the East Channel Region (ECR). During the licence application process the ECA made a commitment to undertake regional assessment and monitoring of the combined effects of their operations in the region.

The first result of this commitment was production of a Regional Environmental Assessment (REA) (Posford Haskoning, 2003) that provided a baseline description of the region and made predictions regarding the impacts likely to result from operation of multiple aggregate extraction licences.

Following this process a regional environmental monitoring programme was designed to provide data capable of assessing the actual impacts of operations and determine whether the predictions of the REA were valid. The monitoring design process resulted in production of the ECA Regional Monitoring Blueprint v0.3 (The ECA & Emu, 2005) which provided the rationale, methodologies and sampling arrays for proposed survey operations.

The Blueprint v0.3 was issued in 2005 and field work began on some of the surveys described. Baseline physical and biological community survey work was undertaken between August and December 2005 and the resulting samples and data were analysed in the following months.

A draft of this report was presented to members of the East Channel Region Technical Working Group (TWG) for review. Following this review, and presentation of the available information to the East Channel Environmental Network (ECEN), revision of the report was undertaken. This document is the revised report.

This document represents the first annual Regional Environmental Monitoring and Management (REMM) Report and provides the following information in 2 parts:

#### Part 1 – Regional Monitoring Report

- Descriptions of the field operations and methodologies employed during baseline surveys*
- Descriptions of the processing of the samples acquired*
- Descriptions of the analysis of the data acquired*
- Development of methodologies for use of third party data sources and the analysis of that data*
- Results of investigation, integration and interpretation of monitoring data*
- Conclusions, regional baseline description and recommendations for repeat surveys in the region*

#### Part 2 – Regional Management Report

- Progress against the targets presented in the ECR Biodiversity Action Plan*
- Proceedings of Technical Working Group and East Channel Environmental Network meetings*
- Liaison arrangements and aggregate extraction and fishing activity reporting*
- Development of the ECA Geographical Information System and website*
- Update to Blueprint v0.3, including progress towards development of the remaining aspects of the physical monitoring studies, 2006 repeat biological sampling update and project plan for following 18 months.*

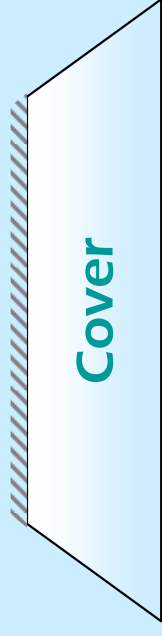
## The ECA Charter

In the REA, the applicant companies agreed to adhere to the ECA Charter which ensures that companies operating in the ECR commit to:

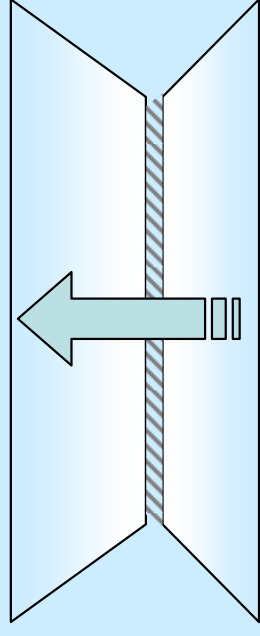
- Implement the results and recommendations of the REA and ensuing studies as appropriate to individual applications.**
- Co-operate with and fund future regional environmental studies and research.**
- Recognise the results of further environmental studies and respond to recommendations.**
- Monitor, mitigate and manage environmental impacts and operational activity on a regional basis.**
- Careful management of dredge area, with an aim of reducing the dredged area to a minimum.**
- Zoning of permission areas to restrict operational dredging areas.**
- Only dredging resources >2m thick.**
- Minimise screening.**
- Transparency – make all relevant dredging data publicly available through regular company reporting.**
- Audit – all relevant data will be made available for analysis by independent experts.**

This document is designed to be read in the following way:

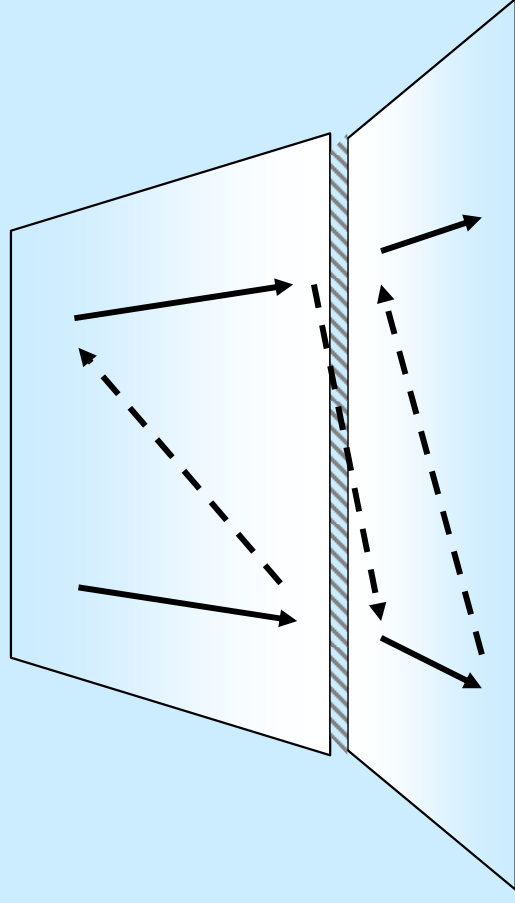
Document is read with spine positioned at the top...



Document opens to the top...



Text boxes are read as shown below:



NB Unless accompanied by a number, the figures & photographs that appear in the report are for illustrative purposes. Any technical figures, tables and appendices referred to in the text are included in CD-ROM attachments to the main report.

Available tables, figures and appendices referred to in the report text are provided on the CD-ROM included. Items not included may be downloaded from the ECA website at:

[www.eastchannel.info](http://www.eastchannel.info)

Comments and queries regarding the information presented in this report may be directed in the first instance to the ECA Facilitator, at the postal address above, or the Regional Development Manager at the email below:

[rdm@marinespace.co.uk](mailto:rdm@marinespace.co.uk)



**This document should be referred to as:**

**The East Channel Association. 2006. Regional Environmental Monitoring and Management Report 2005-2006.**

**This document contains analysis and reporting undertaken by the following people and organisations on behalf of the ECA:**

**Dr Nigel Thomas, Emu Limited – Biological monitoring surveys and data interpretation.**

**The Ecology Department and Laboratories of Emu Limited – Biological monitoring surveys and data interpretation.**

**Dr Mark Lee, Emu Limited – Tracer study development.**

**Dr Mike Dearnaley, HR Wallingford – Plume study development.**

**Emu GIS Department – Charting, GIS development and data management.**

**Andrews Survey Ltd (now Lankelma Andrews) – Core logging and sieve analysis.**

**Dr Andy Plater and Mrs H Hull, The University of Liverpool – Laser particle size analysis.**

**The Geodata Institute, University of Southampton – East Channel Scheduler website development.**

**Dr Brian Marker, ECEN Chairperson – Input to meeting proceedings.**

**Stuart Lowe, MarineSpace Ltd – RDM, sediment survey data analysis and reporting.**

**The East Channel Association Member Companies – Data provision, technical advice and data review.**

**This document can be downloaded as a pdf file from:**

**[www.eastchannel.info](http://www.eastchannel.info)**

**Appendices referred to in this report may not be included on the CD-ROM provided.**

**Appendices will be posted on the ECA website as they become available in a suitable format.**

