

2.1

Introduction

During the planning process for the ECR monitoring programme review meetings were proposed. The ECA association proposed that two main groups would meet to discuss the regional monitoring programme.

2.2

The Technical Working Group (TWG)

The Blueprint v0.3 notes that role of the TWG will be:

- To review interpretive reports and if necessary suggest revisions/modifications to monitoring.*
- To review the monitoring programme and its effectiveness with regard to the aims and hypotheses being tested.*
- Where possible, to reject or accept hypotheses, or to recommend changes to the hypotheses for subsequent years monitoring.*
- Reporting to ECEN Stakeholder Group on the progress and results of monitoring.*

During the previous twelve months the TWG have met on two occasions.

The TWG Start-up Meeting

A TWG Start-up Meeting was held on January 31st 2006 at the Quarry Products Association in London, with assistance from BMAPA. Representatives from Cefas, Defra, English Heritage, the Crown Estate and the ECA attended. The JNCC representative was in contact via a telephone link during the meeting. The meeting was proposed by the ECA to provide an update to TWG members and determine the likely scope of the first full TWG meeting.

The start-up meeting focussed on describing the progress made on regional baseline monitoring, development of the GIS and website and what the terms of references might be for future TWG Meetings.

It was proposed during the start-up meeting that the TWG might consider the following as terms of reference for future meetings:

- The TWG is a forum for technical discussion of regional scale monitoring.*
- The TWG will review and provide advice regarding the methods of and efforts expended on regional monitoring.*
- The TWG will assist, through provision of advice and guidance, in developing information for a wider stakeholder group (ECEN).*



During the year the London Aggregate Working Party received reports on how vital it is to construction in London, that marine aggregate landings, which supply some 25% of aggregate consumption in the capital, are at least maintained. If this is to be achieved, it is critical that licences are approved in at least part of the untapped resource in the East English Channel (EEC). (LAWP, 2005)

The First Annual TWG Meeting

Following completion of the first draft of the regional monitoring report, the report was submitted to TWG members for the agreed 8 week review period. Following the review period the first annual TWG meeting was held at the Crown Estate offices in London on 18/07/06.

The meeting was well attended although certain key attendees were absent and as a result the discussion of the draft regional report was limited to presentation of the available data and provision of a project schedule update.

The TWG meeting was held by the ECA at The Crown Estate, New Burlington Place on 18/07/06

2006 TWG Attendees:

The ECA Companies, Dr Brian Marker (as observer and proposed ECEN Chairman), Cefas, Defra, English Heritage, JNCC, English Nature, Haskoning, The Crown Estate, Emu Ltd and Marine Ecological Surveys Ltd.

The meeting was chaired by the ECA Coordinator and Regional Development Manager

Meeting Outcomes and Actions

Due to the restricted level of data analysis presented in the draft monitoring report, and the absence of certain technical specialists, the meeting resulted in the following specific outcomes and actions:

- Available relevant ECR data to be provided to the ALSF EEC Habitat Mapping Project.*
- Epifaunal analysis of grab samples to be continued until better understanding of the significance of the epifauna to the overall community character was developed.*
- The continuation of epifaunal analysis into the future needs to be considered by the TWG to determine the cost/benefit aspects of the work.*
- Hamon grab sediment data should be integrated with the faunal analysis of grab samples.*
- Exclusion zones around known wrecks need to be carefully considered to ensure that the site receives adequate protection but also that resources are not unnecessarily sterilised.*
- No comments were received regarding the GIS.*
- Website would be developed on a 'layered' basis to allow users access to different types of information by use of password protection.*
- Suggestion that meetings of sub-groups (biological, physical) before the main TWG meeting might be useful in determining outcomes.*
- It was suggested that the form and function of the TWG should be reviewed to better focus activities in future.*
- It was requested that data be made available to as wide an audience as possible and that the ECEN would be an important part of the dissemination process.*

2.3 The East Channel Environmental Network (ECEN)

The East Channel Environmental Network (ECEN) has been set up to provide all stakeholders with the opportunity to consider and comment upon regional monitoring of marine minerals extraction in the ECR.

The Blueprint v0.3 states that the role of the ECEN is:

- **To discuss the findings of the TWG and make suggestions regarding the scale, scope and management of monitoring and aggregate extraction where necessary.**

The ECEN was initially intended to involve the ECA Companies, CEFAS, JNCC/English Nature, MCA/CNIS, English Heritage, The Crown Estate, The Fishing Industry, DCLG and Defra.

Following consideration it was decided that the number of potential ECEN stakeholders would be maximised to accommodate a wider opinion of ECR activities. Invitations to the ECEN meeting were sent to a wide range of organisations. Organisations represented at the 2006 ECEN meeting are noted below.

The format of the ECEN meeting involved introductory presentations by the Chairman and Regional Development Manager followed by a poster session where attendees were free to circulate and review the information presented. The informal nature of the poster session seemed to incite varied debate. The format worked well and seemed to be generally well received by attendees.

Following the poster session a summary presentation was provided by the Regional Development Manager followed by a request for comments and suggestions. Attendance, at about 25, was modest but a wide range of organisations, including NGOs, were represented. As might be expected at an inception meeting, briefing dominated over discussion.

The ECEN meeting was held by the ECA at Baden Powell House on 22/08/06 with the support of The Crown Estate

2005 ECEN Attendees:

The ECA Companies, BGS, BMAPA, Cefas, DCLG, Defra, Emu Ltd, English Heritage, Haskoning (as Crown Estate Agent), Marinet, MCA, National Federation of Sea Anglers, South East Coastal Group, South Downs Coastal Group, The Crown Estate and Wessex Archaeology.

The meeting was chaired by Dr Brian Marker and supported by the Crown Estate

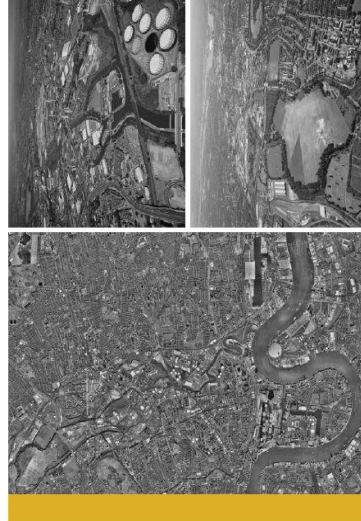
Meeting Outcomes and Actions

Several issues were raised during the meeting that will be addressed in the coming months:

- **The effectiveness of the Reporting and Review process presented in the Blueprint v0.3 was queried insofar as some ECEN attendees felt that it did not provide sufficient time for them to make comments and influence activity for the following twelve months – the ECA agreed to review the process**
- **A request was made that in future the 2005-2006 Monitoring and Management Report be made available to the ECEN prior to the meeting – the ECA agreed to consider this request for future**
- **The development of improved links with coastal management groups and local authorities was requested to enable a better overall description of the region's natural resources and environmental setting**
- **For the first time, a comprehensive regional monitoring framework is in place for an area before any commercial dredging has been undertaken providing a sound reference framework for assessing environmental changes and impacts.**
- **It will take time to establish appropriate criteria and tools for measuring changes and to refine monitoring. The Technical Working Group will have an important role in guiding this. However it may be difficult, in the short term, to distinguish between natural fluctuations and real impacts. Also it will not always be straightforward deciding when a specific impact becomes too great.**
- **It will be important to monitor the recovery of dredged areas after extraction ceases because more detailed information on dredging will be available to set beside biological results than has been available previously. This might lead to better practices for areas yet to be dredged.**
- **It will be important to take the results of regional monitoring, as well as of specific licensed areas, into account in reviews of dredging conditions.**
- **Some participants felt that it would have been better to hold the ECEN meeting about 4 weeks after publication of the first monitoring report so that it could be studied in detail. This had not been possible because of the large amount of time-consuming work involved in analysing biological samples. The ECA agreed to consider whether changes to timing might be possible in 2007.**
- **It was stated that the first monitoring report would be made available on www.eastchannel.info.**
- **The next meeting of the ECEN will be held in the late Summer or early Autumn of 2007. Information regarding this will be posted on the website in due course.**

MAYOR OF LONDON

LOWER LEA VALLEY
OPPORTUNITY AREA PLANNING FRAMEWORK



Consultation draft - May 2006

Regional planning policy is currently directed to development of large areas in the south east of England & London. Maintaining a supply of aggregate will be fundamental in supporting these plans.

MAYOR OF LONDON

The London Plan
Spatial Development Strategy for Greater London



February 2008

TWG

The TWG met twice in 2006. A start-up meeting was held in January and the main TWG meeting was held in July. It is proposed that in 2007 two TWG meetings are held. An initial meeting to discuss the revised regional report is planned for January and the main TWG meeting is planned for May. This is illustrated in the Blueprint Update presented in Part 2: Section 5 of this report (page 125).

The format of these meetings is still under discussion and the suggestions made during previous meetings will be used to direct this discussion.

It is proposed that physical and biological sub-groups meet during the 8 week review period to discuss the most recent regional monitoring activities and data. It has been suggested that these interim sub-group meetings should take place in week 5 of the TWG 8 week review period.

Terms of Reference for Future TWG Activities

The TWG meeting held in 2006 was limited in its ability to make comments and recommendations due to:

- The level of analysis and interpretation that had been carried out on the baseline survey data.*
- The absence of key members of the group and the resulting limited comments received at the meeting.*

It was also suggested following the meeting that the meeting might have been more useful if there were clearer Terms of Reference to direct proceedings.

Therefore, the following are proposed as Terms of Reference for future TWG meetings:

TWG Terms of Reference

The ECR TWG is a group of technical specialists tasked with reviewing the monitoring activities and data generated by surveys in the ECR. The TWG will provide advice regarding the methods employed during field sampling and the analysis of data acquired. The TWG will also comment on the significance of results of monitoring in the context of aggregate extraction management and assist in determining the requirements for future regional monitoring.

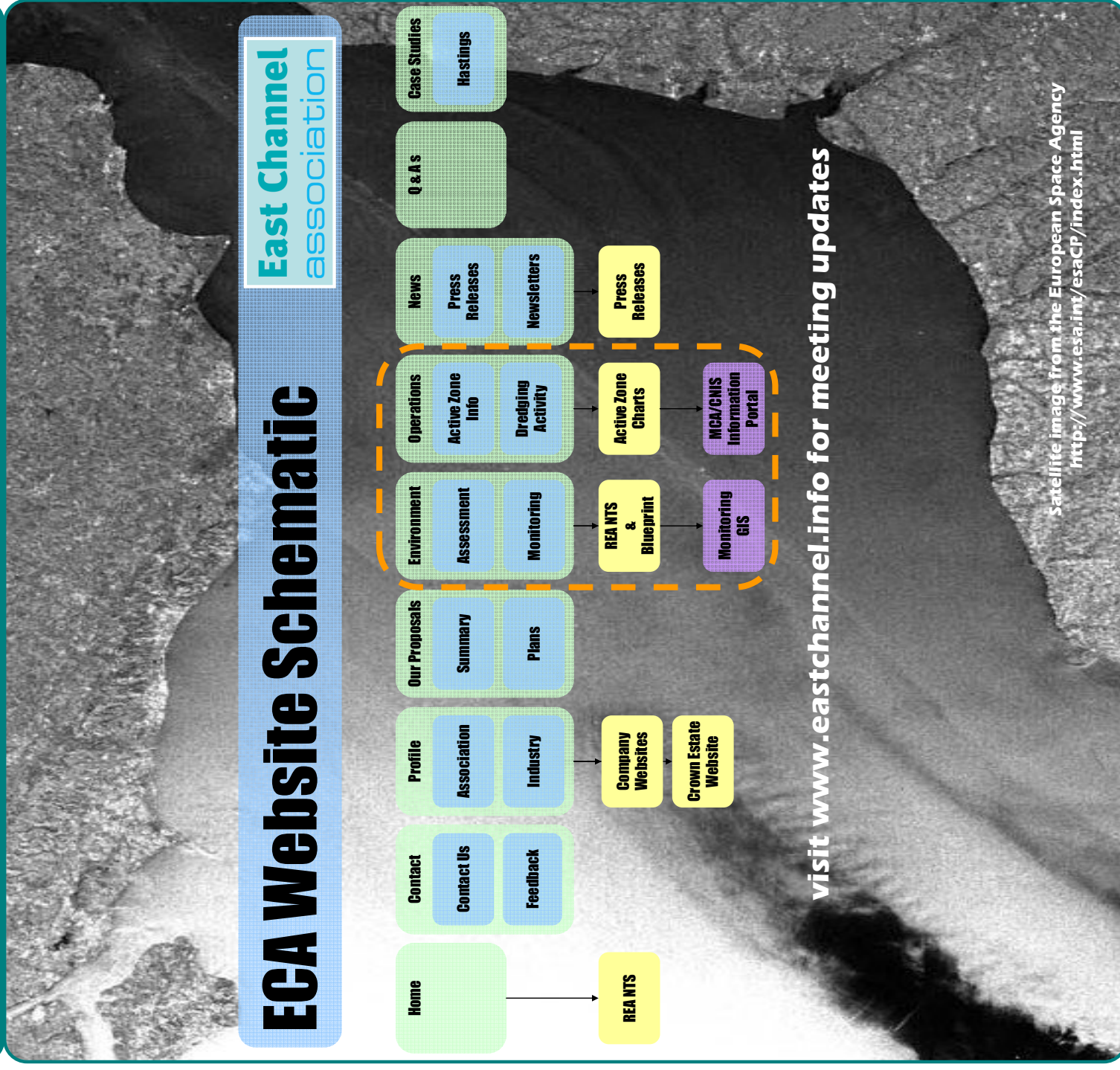
ECEN

It is proposed that the next ECEN meeting is held during July 2007 unless there are clear reasons to hold the meeting at an earlier date. A similar format will be used as that employed during the first meeting. Information regarding the date of meeting will be circulated nearer the time.

During meetings, presentations and liaison activities, other organisations have been identified that may be interested to know more about the ECR development.

These include the JNCC offshore SAC programme, the MESH programme, the ICES HAWG, the English Channel Working Group of the North Western Waters Regional Advisory Council, the Espace Manche Development Initiative, ALSF Funded Habitat Mapping Projects and the CHARM programme.

The ECA will seek to make available the information regarding monitoring and management in the ECR to ensure that opinion is invited from as wide an audience as practical.



Notes: